

# Welcome TO BAVARIA

**EXHIBITOR LIST**  
**SMART CITY EXPO**  
**WORLD CONGRESS 2022**

**Barcelona | Spain**  
**Hall 2 | Stand A129 & B131**



## **THE BAVARIAN PAVILION IS PROUDLY PRESENTED BY**



Bavarian Ministry of Economic Affairs,  
Regional Development and Energy

### **BAVARIAN MINISTRY OF ECONOMIC AFFAIRS, REGIONAL DEVELOPMENT AND ENERGY**

Prinzregentenstrasse 28  
80538 Munich  
Germany

Tel.: +49 89 21620  
info@stmwi.bayern.de  
www.stmwi.bayern.de



### **BAYERN INTERNATIONAL – BAVARIAN BUREAU FOR INTERNATIONAL BUSINESS RELATIONS**

Rosenheimer Str. 143c  
81671 Munich  
Germany  
Tel.: +49 89 6605660  
info@bayern-international.de  
www.bayern-international.de

# **BAVARIA**

## **THE COUNTRY PAVILION OF THE FREE STATE OF BAVARIA IN GERMANY**

More than 30 exhibitors from BAVARIA will display their latest products, services and solutions for Smart Cities worldwide.

Get in touch with innovative companies, cluster, cities & regions.



## ARIADNE MAPS

Brecherspitzstr. 8  
81541 Munich  
Germany

Tel.: +49 174 4079675  
contact@ariadnemaps.com  
www.ariadnemaps.com

### COMPANY PROFILE

Ariadne is the operating system of commercial real estates that provides advanced, real-time customer analytics enabled with award winning accuracy and certified privacy compliance. Track your customer journey with Ariadne's low-cost, plug-and-play solution – no app, no network connection, no cameras, yet fully anonymous and over 95% accurate!

Stand B131/7



## ATENE KOM GMBH

Rosenheimer Str. 141 H  
81671 Munich  
Germany

Invalidenstrasse 91  
10115 Berlin  
Germany

Tel.: +49 30 22183-0  
info@atenekom.eu  
www.atenekom.eu

### COMPANY PROFILE

atene KOM GmbH is a partner for the public sector. We accompany municipalities, counties and companies in the development and implementation of projects in the areas of digitalisation, energy, mobility and education. Our business locations in Europe and Germany enable us to meet the region-specific needs of our clients throughout Europe.

Stand A129/10



## BAYERN INNOVATIV

Bayerische Gesellschaft für Innovation  
und Wissenstransfer mbH  
Lichtenbergstraße 8  
85748 Garching  
Germany

Tel.: +49 911 20671-726  
Fax: +49 911 20671-792  
info@bayern-innovativ.de  
www.bayern-innovativ.de

### COMPANY PROFILE

Bayern Innovativ fosters innovation by facilitating cooperation and knowledge transfer between all stakeholders from the mobility ecosystem across Bavaria - and beyond. We provide funding schemes as well as platforms for experts to meet, exchange ideas and jointly work on innovative solutions for the future of mobility.

Stand B131/4



## BAYERN INNOVATIV

Bayerische Gesellschaft für Innovation  
und Wissenstransfer mbH  
Lichtenbergstraße 8  
85748 Garching  
Germany

Tel.: +49 911 20671-0  
smartcity@bayern-innovativ.de  
smart-regions.bayern

### COMPANY PROFILE

The Smart Cities and Regions Bavaria Network focuses on strategy development and creating actions for data integration in municipalities, counties and regions. The network is open to all interested in Smart Cities and Regions topics and projects. Join us!

Stand B131/4



## THINKNET 6G

Am Tullnaupark 8  
90402 Nuernberg  
Germany

Tel.: +49 911 20671-219  
thinknet-6g@bayern-innovativ.de  
www.bayern-innovativ.de

### COMPANY PROFILE

To ensure that all relevant stakeholders in Bavaria are involved in the research and development of 6G early in this cycle, the Bavarian Ministry of Economic Affairs founded Thinknet 6G to create an agile ecosystem of industry players, research institutions, associations, innovators, start-ups and incubators. Thinknet 6G is both a think tank and an agile community for all organisations and stakeholders who are interested in any aspect of 6G development.

Stand B131/4

---



## BAVARIAN SMART CITIES & REGIONS

organized by City of Regensburg |  
Smart City

Bruderwöhrdstraße 15 b  
93055 Regensburg  
Germany

Tel.: +49 941 507-1061  
Fax: +49 941 507-4859  
R\_NEXT@regensburg.de

### COMPANY PROFILE

Smart cities and smart regions use the opportunities offered by information and networking technologies in the interests of sustainable and integrated urban development. Many Bavarian cities and regions have already set out to become smart. Our goal is always to improve the quality of life for citizens and to increase the opportunities for participation and co-design for each individual. We must meet our very individual challenges with the opportunities offered by innovative technologies and solutions and often develop new approaches to solutions in co-creative processes. [Stand B131/1](#)

---

**BearingPoint®**

**BEARINGPOINT GMBH**

Erika-Mann-Strasse 9  
80636 Munich  
Germany

Tel.: +49 89 540 33 0  
Fax: +49 89 540 33 79 00  
germany@bearingpoint.com  
www.bearingpoint.com

**COMPANY PROFILE**

BearingPoint is an independent management and technology consultancy, with European roots and a global reach. We support world-leading businesses in over 75 countries, through our business units: Consulting, Business Services, and Software Solutions.

We help clients in Transportation and Automotive to develop tomorrow's sustainable mobility.

Stand A129/11

---

**Blickfeld**  
LiDAR / scan your world

**BLICKFELD GMBH**

Barthstraße 12  
80339 Munich  
Germany

Tel.: +49 89 2306935 00  
info@blickfeld.com  
www.blickfeld.com

**COMPANY PROFILE**

Blickfeld was founded in 2017 in Munich with the goal to build a high performant and mass producible LiDAR sensor. The company achieved this by reinventing one of the core components of the 3D sensors as well as rethinking the setup of the device. The result is a performant, small and reliable LiDAR sensor, that, in combination with Blickfeld's perception software, enables countless mobility, smart city, industrial and security applications.

Stand B131/12



## BÜHNENPOLKA

Pickelstr. 6  
80637 Munich  
Germany

Tel.: +49 89 203 543 37  
info@buehnenpolka.de  
www.buehnenpolka.de

### COMPANY PROFILE

Buehnenpolka is a Munich based collective. We combine comedic elements with your company's key values resulting in a personalized performance that resonates with your costumers and staff.

Theatrical tools are key for simulation, providing usability experiences to release your crew's inner creativity. With Improvisation we aim to further accelerate Innovation.

Stand A129/6

---



## CIP GROUP CIP MOBILITY GMBH

Oberanger 32  
80333 Munich  
Germany

Tel.: +49 89 724019-0  
contact@mocci.com  
www.mocci.com

### COMPANY PROFILE

mocci is a brand of CIP Mobility GmbH that considers the topic of mobility holistically and in the context of the connected and digital city of the future. In its Smart Pedal Vehicles (SPV), mocci combines the aspects of digitalization, environment, urbanization, and human well-being. The eBikes are an innovative, individual, and sustainable solution for companies wanting to operate flexibly, quickly and in a sustainable way in urban spaces.

Stand B131/6





## CLEVERCITI

Hofmannstr. 54  
81379 Munich  
Germany

8000 Avalon Blvd. Suite 100  
Alpharetta, GA 30009  
USA

Tel.: +49 89 78576736-23  
[www.cleverciti.com](http://www.cleverciti.com)

### COMPANY PROFILE

Smart Parking for Smart Cities: Reducing Vehicle Minutes Traveled. Cleverciti solves parking search by seamlessly guiding drivers to the most convenient available space, reducing search traffic and vehicle emissions while growing parking revenue and the local economy.

Stand B131/13



## CLUSTER MOBILITY & LOGISTICS, EUROPEAN MOBILITY PROJECT RECIPROCITY, C/O R-TECH GMBH

Franz-Mayer-Str. 1  
93053 Regensburg  
Germany

Tel.: +49 941 604889 0  
[info@mobilitylogistics.de](mailto:info@mobilitylogistics.de)  
[www.mobilitylogistics.de](http://www.mobilitylogistics.de)

### COMPANY PROFILE

The Cluster Mobility & Logistics is leading the European mobility project RECIPROCITY. The name of the project stands for „Replication of innovative concepts for peri-urban, rural or inner-city mobility“. The aim of the project is to identify innovative mobility concepts for rural, peri-urban and inner-city areas and to replicate them elsewhere. The cluster manages the activities of the consortium of ten partners from all over Europe.

Stand B131/2



## CO-EXHIBITOR – CIP GROUP

### DOMETIC GERMANY HOLDING GMBH

Hollefeldstraße 63  
48282 Emsdetten  
Germany

Tel.: +49 2572 879 159  
professional@dometic.com  
www.dometic.com/delibox

#### COMPANY PROFILE

Bring your food delivery business to a new level with innovative transport solutions from Dometic. From temperature-controlled food delivery boxes with active warming and cooling technology to practical soft coolers – our products help you to win loyal customers and boost your revenues in this fast growing market segment.

Stand B131/6

---



### FUJITSU

Mies-van-der-Rohe-Straße 8  
80807 Munich  
Germany

Tel.: +49 89 62060 0  
cic@ts.fujitsu.com  
www.fujitsu.com

#### COMPANY PROFILE

Fujitsu is a leading information & telecommunications provider that supports its customers in all aspects of digital transformation. Fujitsu combines IT services & products with future-oriented digital technologies and creates new values together with customers & partners. In Germany, Austria & Switzerland, Fujitsu has approx. 5000 employees & over 10000 channel partners.

Stand A129/1



## GBCI

Steinsdorfstrasse 8  
80538 Munich  
Germany

Tel.: +49 89 4111 5077  
kkillmann@gbci.org  
www.gbci.org

### COMPANY PROFILE

GBCI is the global verification body recognizing excellence in the green business industry performance through its exclusive administration of sustainability benchmark systems, such as LEED, WELL and others.

GBCI Europe is a regional hub serving the needs of the European green building community by providing on-the-ground customer support for project teams and stakeholders.

Stand A129/8



## HAWA DAWA GMBH

Gotzinger Str. 8  
81371 Munich  
Germany

Tel.: +49 151 6453 2498  
marketing@hawadawa.com  
www.hawadawa.com

### COMPANY PROFILE

Our solution offers ubiquitous real-time air quality monitoring and contextualised insights and analytics with a high spatial and temporal resolution at proven quality traceable to accepted standards.

Entire cities can thus be covered in a commercially viable way.

We make cities data-wise and support them to become more sustainable, healthy and attractive.

Stand A129/7



## INYO MOBILITY GMBH

Am Schammacher Feld 37  
85567 Grafing  
Germany

info@inyo-mobility.com  
www.inyo-mobility.com

### COMPANY PROFILE

INYO realizes customized lightweight vehicles that can be operated automatically. From design to operation, the vehicle is accompanied by a digital twin, which allows for a fast realization of customized vehicle concepts. Based on this approach, the INYO CAB, a 2 to 4-seater lightweight shuttle, is currently being developed.

Stand B131/11



## LIANGDAO GMBH

Head Office:  
Rosa-Bavarese-Str.3  
80639 Munich, Germany

R&D Office:  
Germaniastr. 18-20  
Stairway C., 2nd Floor  
12099 Berlin, Germany

www.liangdao.de

### COMPANY PROFILE

LiangDao is a global leading system provider of LiDAR sensors, providing industry customers with a full stack of LiDAR sensing systems, including automotive-grade LiDAR hardware, perception software, testing, validation and data services. As an Innovator Top 100 company in Germany, LiangDao is dedicated to applying LiDAR systems to a wide range of applications in smart city and automotive.

Stand B131/16



## City of Munich **CITY OF MUNICH**

Department of Communal Services  
GeodataService  
Denisstr. 2, 80335 Munich, Germany  
Tel.: +49 89 233 25969  
digital.twin@muenchen.de

Department of Labor and Economic  
Development  
Herzog-Wilhelm-Str. 2, 80331 Munich,  
Germany  
Tel.: +49 89 233 30196  
europa@muenchen.de

### PROFILE

Munich is the third largest town in Germany. The City of Munich municipality has over 30,000 employees. In 2019, the Munich city council agreed on the political priority to make the Bavarian capital climate neutral until 2035. So Munich is a partner in many EU funded projects and actively seeking to cooperate with other cities on central future and smart topics.

Stand B131/5



## **MUNICH METROPOLITAN REGION**

EMM e.V. Head Office  
Kardinal-Döpfner-Str. 8  
80333 Munich  
Germany

Tel.: +49 89 452 056-010  
info@metropolregion-muenchen.eu  
www.metropolregion-muenchen.eu

### PROFILE

The Munich Metropolitan Region is much more than just one of the most successful economic areas in Europe. In order to further strengthen this attractiveness, districts and cities are working together with industry, science and society in the association European Metropolitan Region Munich (EMM e. V.) and provides the platform for overarching topics, initiates targeted dialogues and organizes joint supraregional performances.

Stand B131/10



## MESSE MÜNCHEN GMBH

Messegelände  
81823 Munich  
Germany

Tel.: +49 89 949 11308  
info@bau-muenchen.com  
bau-muenchen.com

### COMPANY PROFILE

BAU is the world's leading trade fair for architecture, materials and systems, the largest and most important event for the Industry.

Further information: [bau-muenchen.com](http://bau-muenchen.com)

Stand B131/9



## MESSE MÜNCHEN GMBH

Messegelände  
81823 Munich  
Germany

Tel.: +49 89 949 11308  
projektleitung@digital-bau.com  
www.digital-bau.com

### COMPANY PROFILE

Trade Fair for Digital Solutions in the Construction industry.

Further information: [digital-bau.com](http://digital-bau.com)

Stand B131/9



## BAUZENTRUM POING

Bavaria's Largest Homes Exhibition  
[bauzentrum-poing.de](http://bauzentrum-poing.de)

## BAUZENTRUM POING

Senator-Gerauer-Str. 25  
85586 Poing / Grub  
Germany

Tel.: +49 89 949 11638  
[info@bauzentrum-poing.de](mailto:info@bauzentrum-poing.de)  
[bauzentrum-poing.de](http://bauzentrum-poing.de)

### COMPANY PROFILE

Living with Innovations Bauzentrum Poing near Munich is Bavaria's largest homes exhibition. Discover the variety of architecture, innovation and living atmosphere in around 60 model directly on site.

Further information: [bauzentrum-poing.de](http://bauzentrum-poing.de)

Stand B131/9



## MOBIWORX TELEMATIK GMBH

Rosenheimer Straße 44  
83064 Raubling  
Germany

Tel.: +49 8035 96463-0  
Fax: +49 8035 96463-29  
[info@mobiworx.de](mailto:info@mobiworx.de)  
[www.mobiworx.de](http://www.mobiworx.de)

### COMPANY PROFILE

MOBIWORX develops, produces, distributes and services webbased telematics system solutions for the digital transformation and optimization of Businessprocesses. Our clients mainly include public administrations and smart Cities. With our solutions data recording is automated and a digital Transformation of business processes becomes standard.

Stand A129/5



PERPETUUM PROGRESS

## PERPETUUM PROGRESS

Schloßlände 26  
85049 Ingolstadt  
Germany

info@pepro.io  
www.perpetuum-progress.io

### COMPANY PROFILE

Perpetuum Progress is simulation engineering partner in serial development for OEMs and First-Tiers. Also in research projects we develop innovative solutions on the way to autonomous mobility.

This combined experience enables us to create our own innovative platform as a service: Open Validation Plattform (OVAL).

OVAL is a data exchange platform of digital assets for virtual validation.

Stand A129/4



## PricewaterhouseCoopers GmbH WPG (PwC)

Bernhard-Wicki-Straße 8  
80636 Munich  
Germany

Tel.: +49 89 5790-50  
Fax: +49 89 5790-5999  
www.pwc.de

### COMPANY PROFILE

As a company with 12,000 employees, PwC is not only the leading auditing and consulting firm in Germany, but also a technology innovator and software provider. In line with PwC's motto 'solve important problems', we are committed to solving major societal issues with the help of artificial intelligence and mobile technology. We are pushing the mobility revolution, designing solutions for modern and livable cities.

Stand B131/8





## SWARM ANALYTICS

### CO-EXHIBITOR – PwC SWARM ANALYTICS GMBH

Helga-Krismer-Platz 1  
6020 Innsbruck  
Austria

Tel.: +43 664 4678233  
office@swarm-analytics.com  
www.swarm-analytics.com

#### COMPANY PROFILE

At Swarm Analytics, we want to help shape the Smart City of tomorrow! We believe that Artificial Intelligence plays a major role in this and are convinced that new technologies can improve the quality of life for all of us - without sacrificing privacy, individual movement data and personal freedom.

Stand B131/8



### SMART DATA SERVICES

Hansastraße 12-16  
80686 Munich

Kolbermoorer Str. 36  
83026 Rosenheim  
Germany

Tel.: +49 162 2035800  
info@roo.si  
www.roo.si

#### COMPANY PROFILE

Behind Smart Data Services are companies like roosi GmbH with decades of experience and expertise in the municipal environment and in dealing with structured and unstructured data. We help our customers achieve holistic real-time capability and better decision-making. Our business is characterized by trust, fair business and open communication.

Stand A129/2



**S+S REGELTECHNIK**

## **S+S REGELTECHNIK**

Thurn-und-Taxis-Str. 22  
90411 Nuernberg  
Germany

Tel.: +49 911 519470  
mail@SplusS.de  
www.SplusS.de

### **COMPANY PROFILE**

Innovative sensor technology (temperature, humidity, pressure, air quality, light intensity, etc.) and field devices for measurement and control tasks in facility engineering – Quality “Made in Germany”!

Stand B131/15



## **SAVENOW**

Research Cooperation SAVeNoW  
coordinated by AUDI AG  
MX452  
Schollstraße 8  
85055 Ingolstadt  
Germany

Tel.: +49 841 89-33574  
gerhard.stanzl@audi.de

### **COMPANY PROFILE**

SAVeNoW creates an operable and transferable digital twin for urban traffic. Static and dynamic elements are recorded digitally and mapped virtually. Measures (in domains of traffic efficiency safety and ecology) are applied by simulated what-if-scenarios. Dialogue with citizens about automated mobility and use of collected data for digital twin contributes to technology acceptance.

Stand B131/17



## 5G SYNERGIERWERK

Nymphenburger Str. 39  
80335 Munich  
Germany

Tel.: +49 89 38197 3000  
info@5gsynergiewerk.de  
www.5gsynergiewerk.de

### COMPANY PROFILE

5G Synergiewerk is a innovative Tower Company with the focus on implementation of 5G Streetlights.

Stand A129/9



## URBANISTIC GMBH

MTZ, Agnes-Pockels-Bogen 1  
80992 Munich  
Germany

www.urbanistic.de

### COMPANY PROFILE

urbanistic is developing a SaaS platform that enables urban planners and architects to identify the risks and potentials of their planning variants easily. Intuitive modelling tools, real-time simulations and instant KPI calculations provide them with direct feedback on all decision-relevant parameters.

Stand A129/3



Urban Mobility Innovations

**[UI!] URBAN MOBILITY  
INNOVATIONS**

c/o BASE  
Blütenstr. 15  
80799 Munich  
Germany  
Tel. +49 89 6931495 40  
info@umi.city  
www.ui.city

**COMPANY PROFILE**

[ui!] Urban Mobility Innovations offers to accompany your region on the path of digitalization towards a Smart City / Smart Region. Our data analyses based on floating car data (FCD) provide support to understand and optimize the traffic and parking situation in your city with mobility and parking concepts, as well as initial guidance for the selection of the appropriate technology for digitizing parking.

Stand B131/3

---

**Bayern International**

Rosenheimer Str. 143C  
81671 Munich, Germany  
Tel.: +49 89 6605660-0  
info@bayern-international.de  
www.bayern-international.de  
Contact: Sebastian Zettelmeier,  
sz@bayern-international.de

**Bayern Innovativ**

Am Tullnaupark 8  
90402 Nuernberg, Germany  
Tel.: +49 911 20671-0  
info@bayern-innovativ.de  
www.bayern-innovativ.de  
Contact: Marc Kolbe,  
marc.kolbe@bayern-innovativ.de

**IHK-Chambers of Commerce and Industry in Bavaria**

Max-Joseph-Strasse 2  
80333 Munich, Germany  
Tel.: +49 89 5116-0  
Fax: +49 89 5116-1306  
ihkmail@muenchen.ihk.de  
www.muenchen.ihk.de  
Contact: Hannes Aurbach,  
hannes.aurbach@muenchen.ihk.de

**INVEST in BAVARIA**

Rosenheimer Str. 143C  
81671 Munich, Germany  
Tel.: +49 89 24210-7500  
Fax: +49 89 24210-7557  
welcome@invest-in-bavaria.com  
www.invest-in-bavaria.com  
Contact: Andreas Fischer,  
Andreas.Fischer@invest-in-bavaria.de

**the fair agency**

Theresienstr. 47 b  
85399 Hallbergmoos, Germany  
Tel.: +49 89 2444 193 75  
Fax: +49 89 2444 193 79  
info@the-fair-agency.com  
www.the-fair-agency.com  
Contact: Astrid Sterr,  
a.sterr@the-fair-agency.com



# YOUR KEY TO BAVARIA

Easy access to economic partners in Bavaria

Exclusively available at Bayern International,  
the company database »Key to Bavaria«  
comes free of charge and offers information on more  
than 34.000 entries of companies from all sectors.

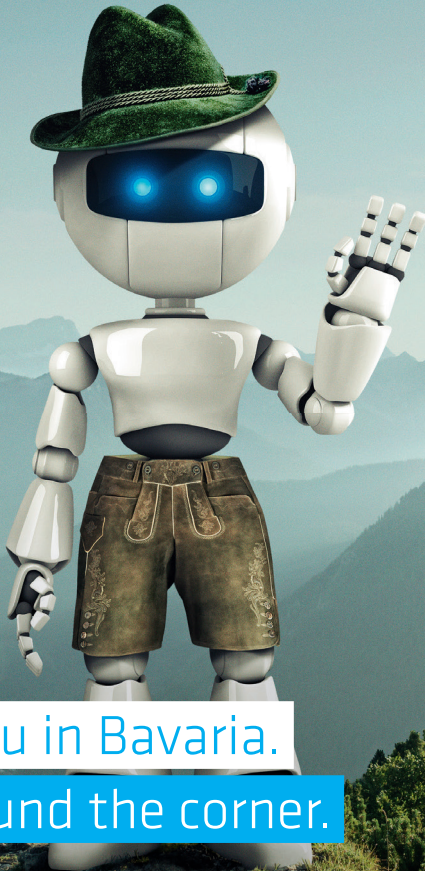


Visit [www.keytobavaria.com](http://www.keytobavaria.com)





invest  
in  
bavaria



See you in Bavaria.

Or around the corner.

Meet us at the booth of BAVARIA

We are looking forward to having a chat about cross-industry innovation and how we can assist you in setting up or expanding business operations in Bavaria. Our services are free and confidential.



- scan me
- follow us on LinkedIn
- get your goodie at the booth

